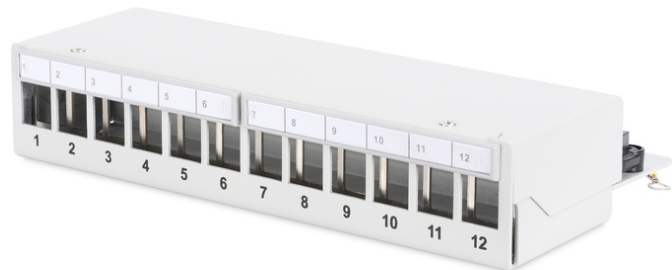


DIGITUS Desktop Modular Patch Panel, shielded, 12-port

DN-93706
 EAN 4016032435242



Modular Desktop Patch Panel, shielded 12-port, light grey

Les panneaux de brassage de bureau de DIGITUS® constituent la solution idéale pour l'application SoHo (Smart Office Home Office). Les douilles RJ45 entièrement blindées offrent un support optimal pour vos câbles en cas de meilleure performance.

Applications pour SOHO

- Panneau de brassage pour modules Keystone
- Blindé
- Etiquettes transparentes
- Couleur: gris clair, RAL 7035
- UH: 1
- Ports: 12

Logistics						
	Number (pcs)	Weight (kg)	Depth (cm)	Width (cm)	Height (cm)	cm³
Packaging Unit Carton	20	16.80	31.00	28.00	58.00	50,344.00
Packaging Unit Inside	1	0.84	0.00	0.00	0.00	0.00
Packaging Unit Single	1	0.84	26.50	12.50	6.00	1,987.50
Net single without Packaging	1	0.00	0.00	0.00	0.00	0.00

More images:

