



Datenblatt - Fiche technique - Data sheet

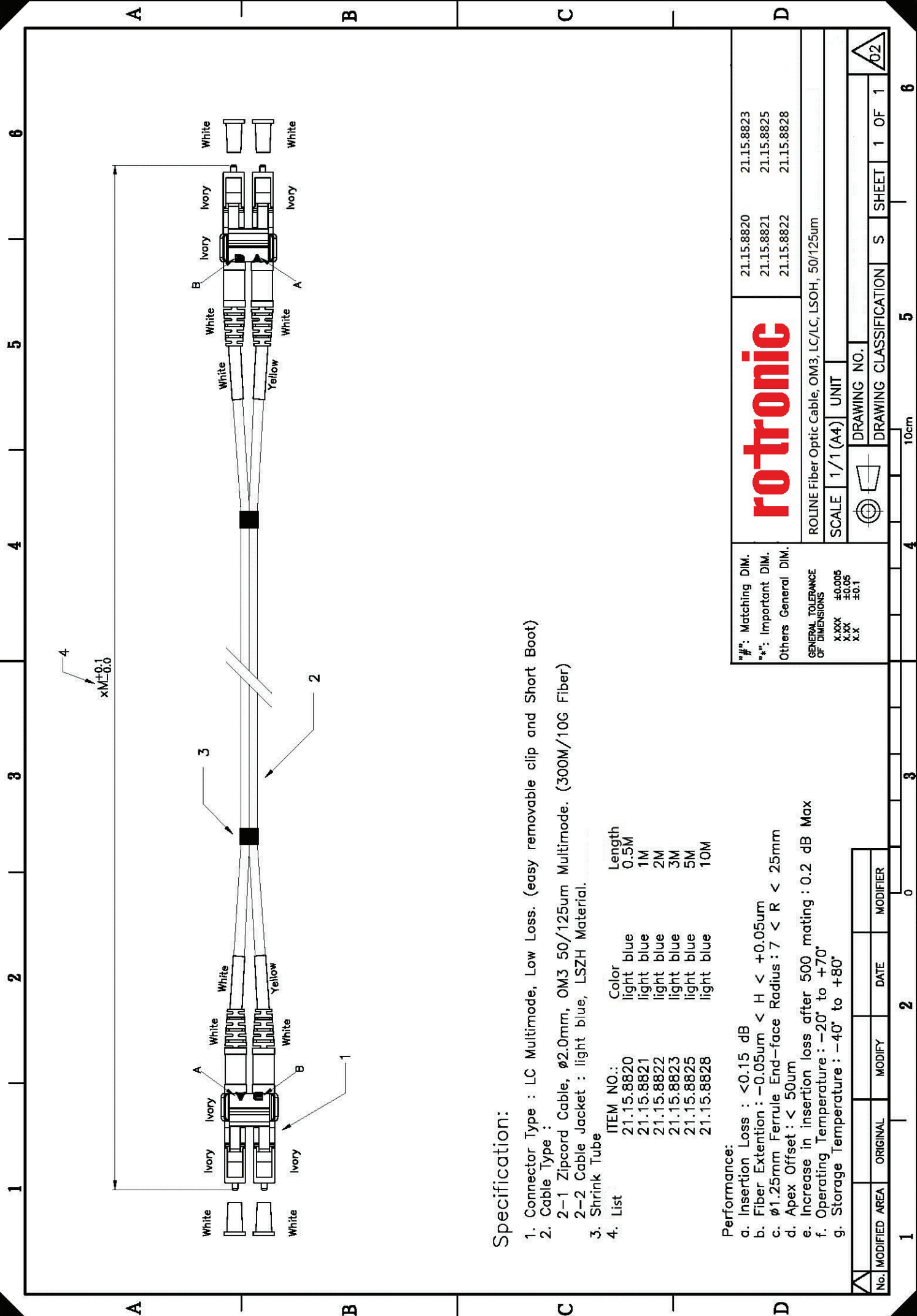
21.15.8822



ROLINE LWL-Kabel 50/125 μ m OM3, LC/LC, Low-Loss-Stecker, 2m

ROLINE Câble FO 50/125 μ m OM3, LC/LC, connecteurs Low-Loss, 2m

ROLINE FO Jumper Cable 50/125 μ m OM3, LC/LC, Low-Loss-Connector, 2m



Specification:

1. Connector Type : LC Multimode, Low Loss. (easy removable clip and Short Boot)
2. Cable Type :
 - 2-1 Zipcord Cable, ϕ 2.0mm, OM3 50/125um Multimode. (300M/10G Fiber)
 - 2-2 Cable Jacket : light blue, LSZH Material.
3. Shrink Tube
4. List

| ITEM NO.: | Color | Length |
|------------|------------|--------|
| 21.15.8820 | light blue | 0.5M |
| 21.15.8821 | light blue | 1M |
| 21.15.8822 | light blue | 2M |
| 21.15.8823 | light blue | 3M |
| 21.15.8825 | light blue | 5M |
| 21.15.8828 | light blue | 10M |

- Performance:**
- a. Insertion Loss : < 0.15 dB
 - b. Fiber Extension : $-0.05\mu\text{m} < H < +0.05\mu\text{m}$
 - c. ϕ 1.25mm Ferrule End-face Radius : $7 < R < 25\text{mm}$
 - d. Apex Offset : $< 50\mu\text{m}$
 - e. Increase in insertion loss after 500 mating : 0.2 dB Max
 - f. Operating Temperature : -20° to $+70^\circ$
 - g. Storage Temperature : -40° to $+80^\circ$

| | | | |
|------------------------------------------------------|--|------------|--------------|
| rotronic | | 21.15.8820 | 21.15.8823 |
| ROLINE Fiber Optic Cable, OM3, LC/LC, LSOH, 50/125um | | 21.15.8821 | 21.15.8825 |
| SCALE 1/1 (A4) UNIT | | 21.15.8822 | 21.15.8828 |
| DRAWING NO. | | | |
| DRAWING CLASSIFICATION | | S | SHEET 1 OF 1 |
| 10cm | | 5 | 6 |

| No. | MODIFIED AREA | ORIGINAL | MODIFY | DATE | MODIFIER |
|-----|---------------|----------|--------|------|----------|
| 1 | | | 2 | 0 | |